

Dependable on a Roll  
**Ceramic Floor Preparation**



*Flooring Experts since 1951*



**Floor Preparation Products  
from Dependable, LLC**

Dependable partnered with Keene Building Products to offer the flooring industry revolutionary underlayment products using entangled net filament technology.

Ceramic installations represent a unique challenge within the flooring industry over any substrate. Dependable underlayments offer contractors fast installation and protection on one roll.

**Roll Products:**



**KeedeRoll™**



**KeedeLath™**



**QQ Step Soft™**



**floorprep.com**

## Deflection and Shear Stress

Flexible substrates place enormous shear stresses on ceramic tile and natural stone causing cracking and tile failure. Uncoupling your tile from subfloor movements can enhance the durability of your tile floor by reducing shear stresses.

Dependable Rolled Underlayments either reinforce your substrate or absorb subfloor movements to protect tile, and promote a long lasting floor system.

### Protect your Tile with these Products:



KeedeRoll™



KeedeLath™



QQ Step Soft™

## The Robinson Wheel Test

ASTM Guidelines rate tile systems on a scale from “Residential” to “Extra Heavy,” stating the suitability of the system for specific flooring environments.

The flooring system is measured by striking the flooring system with a weighted wheel until it cracks; the number of times the system is struck determines the rating. KeedeRoll was tested under ASTM Standard C627 and received an “Extra Heavy” rating, certifies it for use in heavy commercial applications.

PEI Class 1 Rating (No foot traffic)	Recommended for wall use only in residential & commercial applications.
PEI Class 2 Rating (Light traffic)	Recommended for both wall use & bathroom floor applications.
PEI Class 3 Rating (Light to moderate traffic)	Recommended for countertops, walls, & floors where normal foot traffic is expected.
PEI Class 4 Rating (Moderate to heavy traffic)	Recommended for all residential applications as well as medium commercial & light institutional.
PEI Class 5 Rating (Heavy to extra heavy traffic)	Recommended for all residential as well as heavy commercial & institutional applications.

Our system rates as a PEI Class 5 “Extra Heavy” Rating via the Robinson Wheel test.



## KeedeRoll™ 100 Uncoupling Mat

Explicitly designed for use with both modified and unmodified mortars, **KeedeRoll 100's** versatility allows you to install both small and large format tiles with the correct mortar.

It works by absorbing subfloor movements and reinforcing the mortar, protecting tile from shear stresses.

### APPLICATIONS

Plywood or OSB subfloors, Dependable's patches and self-levelers, concrete, and radiant heat flooring.



### FEATURES AND BENEFITS

- Crack isolation protection
- Lay FLAT technology
- ASTM C627 Robinson Wheel Test Rated "Extra Heavy"
- Strengthens wood substrate
- Easy to install
- Light weight
- Can use modified thinset above and below

### PACKAGING

- 60 square feet roll  
9 lbs/roll
- 200 square feet roll  
30 lbs/roll

## KeedeRoll Structural Reinforcement Technology

KeedeRoll enhances the strength of your tile floor in two critical ways.

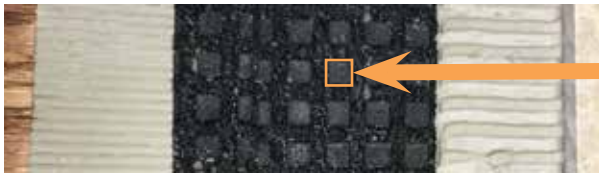
1. KeedeRoll uncouples the tile from the subfloor, and helps absorb shear stresses, while keeping the tile in place.
2. KeedeRoll increases the bearing area of the subfloor by creating a monolithic substrate beneath the tile: effectively connecting two layers of thin-set and the mat, creating one surface area.

The mat further reinforces the thin-set, with the fabric connecting the layers of mortar and the entangled net offering structural support directly below the tile.

## Patent Pending Gauge Thickness with Pedestal Support to the Subfloor

KeedeRoll creates the pedestal connection to the subfloor that enhances the bearing area of the uncoupling mat. Bearing area is the feature that allows an uncoupling mat to function.

KeedeRoll is designed so that the bearing area in the top mortar bond (0.50-inch square) enhances the ability to connect with the subfloor, creating a monolithic connection to the mortar below the fabric.



0.50-inch  
(square)

The fabric acts as a slip sheet while still allowing for the greatest bearing of the tile to the reinforced mortar bed.



The gauge thickness of the mortar bed dictates the bearing area to the subfloor.

Even though the ceramic tile is uncoupled from the subfloor, it is the thickness of the bed and the stiffness of the bed that dictates support.

**The mortar bed in this case is reinforced in two ways – through the fabric and through the nylon filaments.**

This is not structural support, but in the range of the application there is a strength that KeedeRoll provides.

The mortar gauge thickness assures the “cone of bearing” to the subfloor is sufficient with the added stiffness to support the application without breaking grout joints.



## KeedeRoll™ 300 Uncoupling Mat

Moisture can create a hazardous environment in nearly every subfloor making waterproofing a critical part of any flooring system.

**KeedeRoll 300** offers the same uncoupling protection of KeedeRoll 100 by absorbing subfloor movements and reinforcing the mortar, and comes equipped with a waterproof membrane fabric.

KeedeRoll 300's fabric is a triple laminated geotextile, which forms a completely waterproof membrane directly under the entangled net core.

### APPLICATIONS

Plywood or OSB subfloors, Dependable's patches and self-levelers, concrete, and radiant heat flooring.



### FEATURES AND BENEFITS

- Water resistant
- Crack isolation protection
- Lay FLAT technology
- Strengthens wood substrate
- Easy to install
- Light weight
- Can use modified thinset above and below

### PACKAGING

- 60 square feet roll  
9 lbs/roll
- 200 square feet roll  
30 lbs/roll





## KeedeRoll™ MT Uncoupling Mat

Tile poses a unique challenge for builders attempting to control noise. Like most hard surfaces, ceramic tile performs poorly in many environments; unlike most hard surfaces, solving this issue while maintaining a durable floor is difficult.

Traditionally, rubber mats reduce unwanted impact noise by deadening noise below hard floor coverings. Unlike wood and vinyl, tile also requires a durable substrate that reduces subfloor movements.

KeedeRoll MT combines our patented Muffling Technology with our uncoupling KEEDE technology to create a quiet yet durable subfloor. Specifically designed for ceramic tile, KeedeRoll MT contains all the benefits of both an uncoupling mat and a sound mat.



### FEATURES AND BENEFITS

- Lay **FLAT** technology
- Strengthens wood substrate
- Easy to install
- Light weight
- “Extra Heavy Rated”
- Reinforcement for mortar
- 21 point delta for IIC

### PACKAGING

- 200 square feet roll  
30 lbs/roll

## KeedeRoll MT Sound Testing

**Sound is measured in two different ways: STC and IIC**


### **Sound Transmission Class (STC)**

Measures the transmission of airborne noise through walls and floors.

### **Impact Isolation Class (IIC)**

Measures the transmission of noise caused by impact; the most common form of impact noise in residential construction is footfall.

Ceramic tile floor systems are most concerned with impact noise. Softening the connection between the subfloor and the floor covering reduces the amount of noise passing through your assembly. This technique is part of the reason why carpet performs better than hard surfaces acoustically: carpet pad softens the connection between the carpet and the subfloor. KeedeRoll MT thus muffles impact noise, while also protecting the tile against shear.



### **Sound Testing**

ASTM E 90, ASTM E 492, ASTM E 2179:

Ceramic Tiles over KeedeRoll MT over a 8-inch concrete slab:

IIC 53

Delta 21

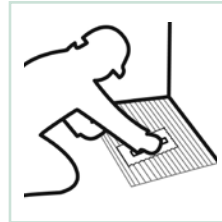


## Quick Step by Step Installation for KeedeRoll

KeedeRoll offers ease of installation and convenience on a roll. Installers can easily cut KeedeRoll around obstructions like: pipes, wires and posts with scissors, and install tile over the mat as soon as it's laid down over thin-set.

**For complete Installation Instructions for KeedeRoll Products please refer to the specific product Data Sheet. You can download it from [www.floorprep.com](http://www.floorprep.com).**

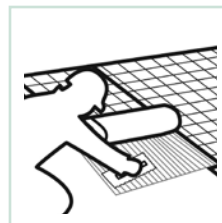
1. Place loosely mixed mortar on the subfloor with 1/4" x 3/16" v-notch trowel.



2. Roll KeedeRoll out over the mortar thin-set with selvedge seam facing the opposite direction of the wall and the fabric facing the floor. Press mat down with a float or roller ensuring a good bond.



3. Apply mortar over the selvedge edge and the next section of the subfloor. Apply the non-selvedge edge side facing the wall and continue this pattern until room is complete.



Once all of KeedeRoll is installed please follow manufacturer's installation guidelines for tile.

*Note: Periodically check the coverage by lifting the mat.*

## Advantages of KeedeRoll over Backerboard

Backerboard once offered tile setters the quickest method for installing ceramic tile and natural stone.

KeedeRoll offers numerous advantages over traditional installation methods:

1. KeedeRoll does not require the installer to stagger joints, eliminating the need to plan out and precut the product before installation
2. KeedeRoll's lightweight design makes cutting and scoring easy.
3. No screwing is required, eliminating this step from the process and reducing cost
4. As soon as KeedeRoll is placed into the mortar bed, you can begin installing your tile above the roll following the manufacturer's instructions.

Using KeedeRoll offers installers the fastest way to both install tile and to protect your tile from subfloor movement.





## KeedeLath™

Lath has been used to reinforce mortar for generations. Dependable revolutionized lath technology with our new product: KeedeLath.

KeedeLath is a lightweight, self-furring, synthetic lath designed for cut-free tile installations using both thin-set mortar and self-leveling underlayments.

KeedeLath's fiberglass frame, combined with its entangled nylon core, creates a system that is both stronger than metal lath, and more durable.

The unique patented design replaces old metal lath in a variety of applications.

### APPLICATIONS

Self-leveling applications, plywood, mortar beds, manufactured stone veneers, and thin stone veneers.

### PACKAGING

100 sq. ft. (4 ft. width, 25 ft. length, 11 lbs/roll) roll



### FEATURES AND BENEFITS

- Self-Furring
- Non-Corroding
- Lightweight
- Flexible
- High strength fiberglass
- Creates mechanical bond
- Fast installation
- Easy to handle and cut with scissors

## Self-Leveler Installation

Self-leveling underlayments provide a sturdy substrate for tile to rest on, and offer many advantages over traditional backerboard.

Unlike backerboard, self-leveling underlayments require no screwing.

Self-leveling underlayments can also be reinforced with a lath to provide a better mechanical bond to your substrate and more tensile strength to reduce cracking.

Dependable has long offered impressive self-leveling underlayments, including both gypsum and portland based products.



Traditionally tile struggles to offer good impact noise resistance in flooring applications. Since impact noise travels through connections, tile tends to perform poorly compared to carpet or other hard surfaces. Dependable offers a unique solution to this problem: QQ Step Soft™.



## QQ Step Soft™

QQ Step Soft is a recycled rubber mat, which dampens impact noise in flooring systems and acts as an anti-fracture membrane to protect tile against cracking.

QQ Step Soft is easy to install: simply thin-set the mat to the floor and install the tile normally. Regardless if your substrate is wood or concrete, QQ Step Soft will improve your sound ratings and protect your tile from cracking.

### APPLICATIONS

Hardwood, engineered wood, laminate, vinyl plank, ceramic tile, stone, and under concrete.

### PACKAGING

QQ Step Soft 03/035 (3.0 mm) - 50 ft. / 200 sq. ft. / 96 lbs.

QQ Step Soft 05/035 (5.0 mm) - 25 ft. / 100 sq. ft. / 88 lbs.



### FEATURES AND BENEFITS

- Crack isolation capabilities
- Recycled material
- Low VOC content
- High density
- Low compressibility
- Effective impact noise reduction

## Product Profile: SKIMFLOW® HPI

For years, self-leveling underlayments offered contractors fast installations over large areas, and a durable surface for floor coverings.

SKIMFLOW® HPI continues that tradition, and creates a quick, level surface with superb adhesion and tensile strength.

SKIMFLOW HPI is a unique polymer modified gypsum cement self-leveling underlayment for use over nearly any substrate. SKIMFLOW HPI can be pumped or poured and delivers high strength, good water resistance and outstanding adhesion.

Applications from as thin as 1/8" and as thick as 3" depth can be achieved in a single pour.

Gypsum self-leveling underlayments hold many advantages over standard cementitious self-levelers. Since gypsum dries instead of cures, SKIMFLOW HPI can receive a final floor covering in as little as four hours, much faster than portland cements.

SKIMFLOW HPI can withstand significant shear stress, with a tensile strength of 1,000 psi, also much stronger than traditional concrete.





# Modern Solutions for Floor Preparation



## American Institute of Architects Dependable Outline

### Summary

This presentation will discuss the importance of a properly prepared substrate for floor covering installation. Accurate floor preparation helps keep floors leveled, sealed, durable and long-lasting, which can reduce cost and material consumption in construction. The presentation provides an overview of the history of gypsum, best floor installation practices and latest technology in the substrate market.

### Learning Objectives

- Review the history of gypsum and the latest technological advances that allow for a decrease in material consumption and improvement in building turnaround.
- Analyze improper floor preparation and discuss the potential flaws associated with it.
- Establish the best practices and benefits used to prepare a floor for a fast track installation.
- Discuss how to properly mitigate moisture on a job site which helps in reducing floor damages and improving air quality.

*Dependable/Keene Building Products is a registered provider with The American Institute of Architects Continuing Education Systems. Credit earned upon completion of this program will be reported to CES Records for AIA members. Credit includes Health, Safety, and Welfare (HSW) (1 Credit Hour).*

*Certificates of completion for non-AIA members are available upon request. This program is registered with the AIA/CES for continuing professional education. As such, it does not include content that may be deemed or construed to be an approval or endorsement by the AIA of any material of construction or any method or manner of handling, using, distributing, or dealing in any material or product. Questions related to specific material, methods and services will be addressed at the conclusion of this presentation.*



**Call TODAY to set up  
a lunch meeting  
877-514-5336**

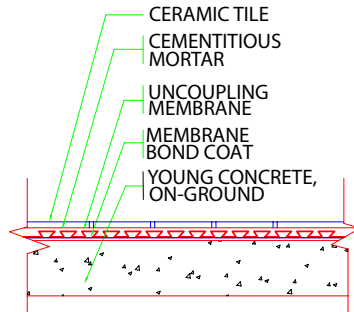
Dependable prides itself on offering products which comply with TCNA guidelines for tile installations, a couple examples of approved systems include:

## F128-15

Dependable's approved products: **KeedeRoll 100**

### INTERIOR FLOORS OVER CONCRETE

On-Ground Young Concrete F128-15  
Uncoupling Membrane  
Ceramic Tile



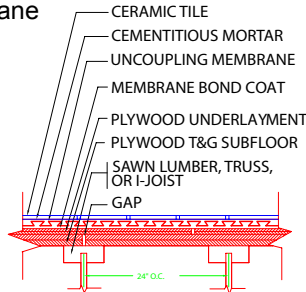
COPYRIGHT © 2015 by Tile Council of North America

## F147-15

Dependable's approved products: **KeedeRoll 100**  
**KeedeRoll 300**

### INTERIOR FLOORS OVER WOOD

Joists 24" o.c./Plywood Subfloor F147-15  
Plywood Underlayment  
Uncoupling Membrane  
Ceramic Tile



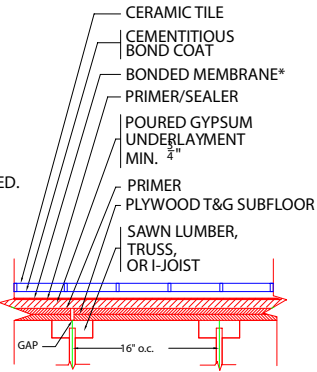
COPYRIGHT © 2015 by Tile Council of North America

## F180-15

Dependable's approved products: **SKIMFLOW HPI**

### INTERIOR FLOORS OVER WOOD

Joists 16" o.c./Plywood Subfloor  
Poured Gypsum Underlayment  
Bonded Membrane  
Ceramic Tile



\*USE OF A MEMBRANE IS REQUIRED.  
SEE MEMBRANE OPTIONS.

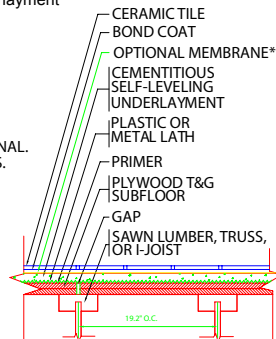
COPYRIGHT © 2015 by Tile Council of North America

## F185-15

Dependable's approved products: **SKIMFLOW® ES**  
**KeedeLath**

### INTERIOR FLOORS OVER WOOD

Joists 19.2" o.c./Plywood Subfloor  
Cementitious Self-Leveling Underlayment  
Ceramic Tile



\*USE OF A MEMBRANE IS OPTIONAL.  
SEE MEMBRANE OPTIONS.

COPYRIGHT © 2015 by Tile Council of North America



## Self-Levelers

Dependable's self-levelers are both pumpable and pourable and can be used on a variety of surfaces including wood, ceramic tile, and concrete. There is a solution even for the most difficult substrates.

- SKIMFLOW ES** Portland and aluminate cement based self-leveler
- SKIMFLOW HPI** A high strength gypsum based self-leveler for use over virtually all interior surfaces
- SKIMFLOW TT** A cementitious, self-leveling wear resistant topping designed for interior structural floors
- SKIMFLOW NP** A No Prep, hybrid cement self-leveling underlayment designed for time sensitive projects
- SKIMFLOW LCB** A gypsum based self-leveling underlayment reinforced with fibers designed for use directly over wood



## Feather and Patch

The adhesive friendly, mildewcide protected products are easy to use with a quick dry time. From a feather finish to over an inch in thickness the Dependable feather and patch products will be sure prep the floor.

- FEATHERCRETE** A fine textured, smooth latex modified cement patch
- SKIMCRETE XL** Fast drying, fast cover, latex modified blended cement patch
- WHITE SKIMCOAT** The original quick setting, high strength gypsum patch
- PRONTO ULTRA** A fast setting, fast drying latex modified gypsum based floor underlayment patch
- SKIMCRETE CP** A high performance repair mortar
- POLYSKIM** A premium gypsum based skimcoat designed for use over gypsum concrete, wood, & other surfaces



## Moisture

Cost effective and high quality our moisture mitigation products can prep any concrete with moisture issues helping fast track a job while saving money.

- VAPORSEAL HM** A two-part solid epoxy moisture mediation product for 75%-100% relative humidity



## Multi-Family Underlayment

Dependable provides a one source gypsum underlayment and sound control system providing durability, luxury and comfort in new multi-family construction.

<b>GSL K2.6</b>	A standard gypsum underlayment for wood frame and precast concrete construction
<b>GSL M 3.4</b>	A premium high strength gypsum for renovations and high traffic projects
<b>GSL CSD</b>	A gypsum portland cement, designed for fire-rated corrugated steel deck construction applications
<b>GSL RH</b>	A quick-setting gypsum cement formulated for radiant floor heating applications
<b>GSL ALL PURPOSE SEALER</b>	Use with GSL products to enhance the bond between the underlayment and finished floor covering
<b>GSL PRIMER</b>	Use with GSL products to enhance the bond between the underlayment and various substrates
<b>CONSOLICRETE</b>	A two-part epoxy designed to repair damaged substrates
<b>QUIET QURL</b>	A variety of entangled net sound control mats designed for use with the GSL products



## Primers, Adhesives and Additives

For high standards and when added adhesion is needed Dependable's primers and additives improve adhesion, flexibility and add extra mildewcide protection.

<b>ACRYLIC EMBOSSING ADDITIVE</b>	Admixture and primer for use with all Dependable trowelable products
<b>PRIMER A</b>	An acrylic copolymer primer technology with alkali resistance to pH 14
<b>PRIMER SL</b>	Latex based primer compatible with Dependable's self level products
<b>WHITE LATEX LIQUID</b>	For use as a primer or additive



## Rolled Underlayments

Whether tile cracking, noise or moisture is an issue we have a solution to keep floors durable and comfortable. These high performance underlayments work well with both residential and commercial settings.

<b>KEEDEROLL 100</b>	An entangled net uncoupling mat designed to keep tiles isolated and prevent cracking
<b>KEEDEROLL 300</b>	A waterproof uncoupling mat designed to keep tiles isolated and prevent cracking
<b>KEEDEROLL MT</b>	A fast, durable and cost effective solution to protect tile and reduce unwanted noise in one roll
<b>KEEDEBAND</b>	A 5" wide waterproofing band for KEEDEROLL 300 waterproofing installations
<b>QQ STEP SOFT</b>	A sound deadening rubber mat promoting anti fracture of tile and increasing sound ratings
<b>KEEDELATH</b>	A synthetic self-furring lath that is a lighter alternative to traditional metal lath



**Dependable**

*Flooring Experts since 1951*

© 2018 Dependable, LLC™, all rights reserved. Printed in U.S.A. All logos/images are trademarks of Dependable, LLC. Mayfield Hts., OH USA.



1951 **in Business** 2018

OWNED AND MADE  
**IN THE USA**  
  
SINCE 1951

info@dependable.us  
floorprep.com

800 | 227 | 3434  
P 440 | 333 | 1123  
F 440 | 333 | 3781