



BY DEPENDABLE

LEVELING TO ELEVATION OVER SOUND MAT

Project Summary:

Leveling to elevation over sound mat while ensuring an exceptionally durable subfloor

Use: Apartments

Contractor: RP Coatings

Location: San Francisco, CA

Solution Components:

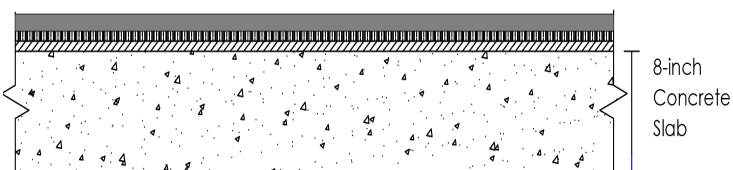
- Quiet Qurl® 025 RF MT
- Quiet Qurl® Reinforcement RWT
- Platform L2

Sound attenuation systems are widely used throughout flooring installations. However, leveling to specific elevations over sound mat with a portland cement based system is an approach typically reserved for gypsum based cementitious underlayments over wood substrates.

It has been that way with good reason, given portland cement based leveling systems are subject to shrinkage and must be anchored to the substrate (concrete/wood/existing flooring) rather than applied on a “floating system.” Keene Building turned to their sister company, Dependable for their Platform L2 self leveling underlayment (SLU). Platform L2 utilizes the portland based Synthe-cem® cement system. Synthe-cem® was developed to provide SLUs the greatest stability over compromised substrates, while providing superior flow, rapid set times and a strong durable surface exceeding the requirements of high-end flooring finishes. That outcome, combined with exceptional sound performance is exactly what was desired.

The 20 story, luxurious, waterfront SOM development located at One Steuart Lane (previously 75 Howard), San Francisco boasts a prestigious location to be enjoyed! This 335,000 ft² LEED® Gold SOM development is the last new condo building to be built on the water at the Embarcadero, San Francisco’s iconic eastern bayside neighborhood.

Project Details



STC 60-62

IIC

Vinyl 55-56

Laminate EW 57-58

Ceramic 56-57

“One Steuart Lane is a boutique collection of superlative condominium residences on the Bay. Located at the corner of Steuart Lane & the Embarcadero, this once-in-a-generation opportunity affords a waterfront lifestyle rarely available. Designed by world-renown architects Skidmore, Owings & Merrill, designed as a timeless connection between the city & the water...”

Corcoran Global Living.

**SOUND SOLUTIONS.
SUPERIOR FLOORS.**

floorprep.com

Leveling to Elevation Over Sound Mat

Keene Building Products worked with SOM Development to specify a very effective sound attenuation system (Quiet Qurl 025 RF MT) over the concrete substrate, followed by a leveling course of Platform L2, applied in some areas up to 3" deep over the floating sound mat. The system not only provides exceptional sound attenuation, it reinforces the underlayment installation and provides crack suppression.

The 'sound leveling system' was installed by RP Coatings who detailed the Quiet Qurl® acoustical mat installation to address elevation variability and existing conduits on the concrete substrate. RP Coatings and the construction team were impressed by the ability to pump a complete 12,000 – 18,000 ft² of floor in a single day and be walking on the poured material within hours!

The outcomes speak to the spectacular development; Exceptional Sound Attenuation; Flat floors to elevation; and a robust, durable underlayment suitable for high end flooring.

Quiet Qurl® 025 RF MT

Sound mat that limits impact noise between floors. This resilient mat absorbs noise when sandwiched in a mass-spring-mass building design.

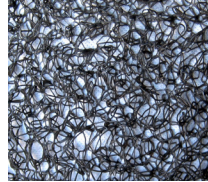


The RF fabric adds an extra measure of reinforcing fabric that adds to the tensile strength on the bottom side of the underlayment.

The MT option adds a high loft fabric to the bottom of the Quiet Qurl that will create up to an additional 5 IIC points for the assembly verses the standard version.

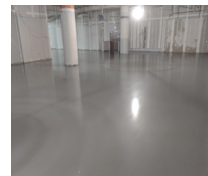
Quiet Qurl® Reinforcement RWT

A crack suppression mat used to reinforce concrete and underlayments when used in thin applications.



Platform L2

Hydraulic cement self leveling underlayment powered by portland based Synthechem® technology designed to facilitate flat floors with low surface preparation.



Keene Building Products and Floorprep.com provide turnkey solutions for the flooring space, leveling, moisture, patch, sound, UL and more!

