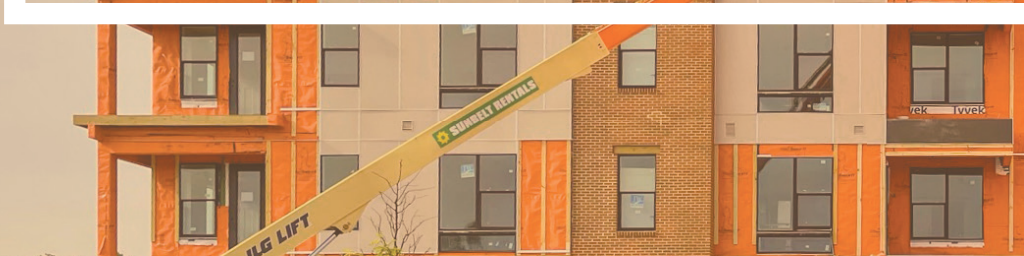


THE REPAIR FAMILY FOR THE MULTI-FAMILY



SELF-LEVELING UNDERLAYMENTS, PATCHING MATERIALS, PRIMERS AND CONSOLIDATORS

COMPATIBLE WITH A WIDE VARIETY OF FINISHED FLOORING: CARPET, CERAMIC TILE, LVP, RESILIENT, HARDWOOD, & MORE.



**FAST-TRACK
REPAIR SOLUTIONS**



**RH-TOLERANT
SOLUTIONS**



☎ 440-333-1123
☎ 440-333-0070
✉ info@floorprep.com
🌐 floorprep.com

**Compromised or badly deteriorated substrates?
Contact us, or scan QR Code to visit us online!**



SCAN FOR SITE



ENGINEERED FOR PLACEMENT OVER GYPSUM AND WOOD SUBSTRATES

FloorPrep.com's materials offer everything from rapid repair of existing gypsum substrate, to partial or full substrate replacement while retaining sound and fire ratings (UL). Owned and backed by one of the largest Multi-Family solutions providers in the industry, FloorPrep.com offers American engineered and manufactured solutions for new construction and renovation.

SELF-LEVELING UNDERLAYMENTS (SLUs) FloorPrep.com's Self-Leveling Underlayments (SLUs) offer a Hybrid Gypsum-Portland chemistry that ensures full compatibility with gypsum substrates, all while delivering the superior durability of pre-sanded, hybrid cement technology.

SKIMFLOW® LCB

- 50 lb bag DSFLCB50
- >4200 psi
- Feather ¼" – 2"
- Liquid Cement Board (LCB)



Pumpable, Fiber-Reinforced, Polymer-Modified Gypsum Hybrid SLU

LCB is ideal for existing gypsum, wood and compromised substrates.

SKIMFLOW® NP

- 50 lb bag DSFNP50
- >5000 psi
- Feather ¼" – 2"
- Extendable with Sand



Pumpable, Polymer-Modified, High-Flow Gypsum Hybrid SLU

NP excels on thin applications at +/- ¼" for time-sensitive projects.

SKIMFLOW® LP

- 50 lb bag DSFLP50
- >4100 psi
- Feather ¼" – 2"
- Extendable with Sand



Pumpable, Gypsum Hybrid Self-Leveling Underlayment

LP is designed to address out of level or old damaged floors in a variety of environments.

PATCHING MATERIALS FloorPrep.com offers patching materials with a variety of application, placement, speed, and compatibility characteristics to quickly address Multi-Family substrate repair.

POLYSKIM®

- 25 lb Bag DPS25
- 4 x 10 lb Bag/Case DPS4x1

Polymer-Modified, Gypsum Based Patching Compound

Effortless application with enhanced bond over gypsum concrete, wood, and other surfaces.



PREPRO FEATHER™

- 4 x 10 lb Bag/Case DPPF4x10

- RH-Tolerant
- Rapid-Drying

Trowelable, Latex-Modified, Underlayment and Patch

Permits rapid installation of floor coverings. Designed for interior use.



WHITE SKIMCOAT™

- 50 lb Pail DWS50
- 25 lb Bag DWS25
- Rapid-Drying

Add White Latex Liquid When Required

All-purpose gypsum patching compound for dry interior applications.



PRIMERS & CONSOLIDATORS FloorPrep.com offers exceptional priming and consolidation solutions to ensure successful, durable installation.

PRIMER A™

- 5G Pail DPA5
- 4 x 1G Jug/Case DPA4x1
- Alkali Resistance to pH 14, Low VOCs, Fast-Drying

Universal Primer for Underlayment and Patch; Breakthrough Acrylic Copolymer Technology

Provides excellent coverage and easy handling. Suitable for a wide variety of porous and non-porous substrates making it the only required primer in typical SLU installations.



PREPRO SLV™

- .63G Kit/Box PPSLV63
- Single-Coat Application with Low Viscosity
- Water-Based, Surface-Strengthening Epoxy Primer; Penetrates Compromised Gypsum or Lightweight Concrete

Provides a sound, strong, consolidated surface prior to flooring repair. Typically compatible with primers and adhesives for non-absorbent surfaces once cured.



MAY SUPPORT CONTRIBUTION TO LEED V4 CERTIFICATION OF PROJECTS IN THESE CATEGORIES

- Low-Emitting Materials
- Life-Cycle Impact Reduction
- Material Ingredient

- Sourcing of Raw Materials
- Innovation



- 440-333-1123
- 440-333-0070
- info@floorprep.com
- floorprep.com

Compromised or badly deteriorated substrates? Contact us, or scan QR Code to visit us online!



SCAN FOR SITE